



CAPABILITY STATEMENT

CONSTRUCTION · CIVIL · ENGINEERING

BUILDING DIFFERENT.

EROC is a self-performing construction, civil and engineering group, delivering projects of every scale across Victoria.

A dedicated, passionate and professional contractor, EROC maintains high standards and achieves results in diverse environments — from live school sites to the largest rail programme in the country.

/ 01

Self-Performing Capability

We hold the skill set to manage and deliver lump-sum packages of work seamlessly, using our own dedicated workforce supported by a trusted network of subcontractors.

/ 03

Engineering-Led Delivery

Chartered civil and structural engineers sit behind every programme decision, keeping design intent, sequence and quality on the critical path.

/ 02

Supply Chain & Partnerships

Equipped with the right resources and a proven record of managing projects and subcontractors on site — addressing both client commercial and site requirements.

/ 04

Our Own Plant & People

A modern owned fleet — from 3-tonne excavators to posi-tracks — operated by our own workforce, so capability never depends on someone else's availability.

\$850M+

programme value our engineers have been embedded in

\$50M+

concurrent scopes managed at a single time

\$10M

self-performed contracts successfully delivered across markets

THREE ARMS. ONE STANDARD.

The group is segregated into three core businesses, each purpose-built for its market — sharing one management system, one engineering bench and one standard of delivery.



EROC

ENGINEERING & PROJECT MANAGEMENT

Professional engineering and project management services. Chartered civil and structural engineers, registered with the Business Licensing Authority, embedded in major infrastructure programmes as managing contractors and delivery leads.



ECON

EROC CONSTRUCTION PROJECTS

Our commercial construction arm, delivering building and infrastructure works for public-sector clients including local councils, the Department of Transport and the Victorian School Building Authority. Licensed commercial builder (low-rise) with the Building and Plumbing Commission.



EROC CIVIL





TIER 1 CIVIL WORKS · CFMEU EBA

Our civil construction business, operating under a CFMEU enterprise agreement and purpose-built for the commercial Tier 1 market. Self-performed earthworks, drainage, concrete and in-ground services for Australia's largest contractors and programmes.

ACCREDITATIONS & PREQUALIFICATION.

EROC's management systems, licences and prequalifications are held at group level and apply across all three businesses — independently certified, audited and maintained.

CERTIFIED MANAGEMENT SYSTEMS — DLCS INTERNATIONAL · JAS-ANZ ACCREDITED

 <p>ISO 9001:2015 Quality Management</p>	 <p>ISO 14001:2015 Environmental Management</p>	 <p>ISO 45001:2018 Health & Safety Management</p>	 <p>Certification No. 21175 JAS-ANZ Accredited</p>
---	--	---	---

LICENCES & PREQUALIFICATION — STATE OF VICTORIA

 <p>Commercial Builder's Licence Low Rise · BPC Victoria</p>	 <p>Chartered · Civil & Structural Registered — BLA Victoria</p>	<p>CSR CONSTRUCTION SUPPLIER REGISTER — PREQUALIFIED</p>
---	---	---

- | | |
|--|---|
| <ul style="list-style-type: none"> — New commercial construction — Commercial refurbishment — Office fit-out — Office fit-out (non-structural) — Construction & contract management | <ul style="list-style-type: none"> — Civil engineering — Structural engineering — Building condition assessment — Project management — Construction management |
|--|---|

INDUSTRY MEMBERSHIPS

 <p>Member Master Builders Victoria</p>	 <p>Member Civil Contractors Federation</p>	 <p>Member Landscaping Victoria</p>
--	--	--

INSURANCES

- Public Liability — \$20,000,000
- Professional Indemnity — \$5,000,000
- WorkCover — Victoria

Certificates of currency, certification schedules and CSR registration details are available on request.

WHAT WE DELIVER.

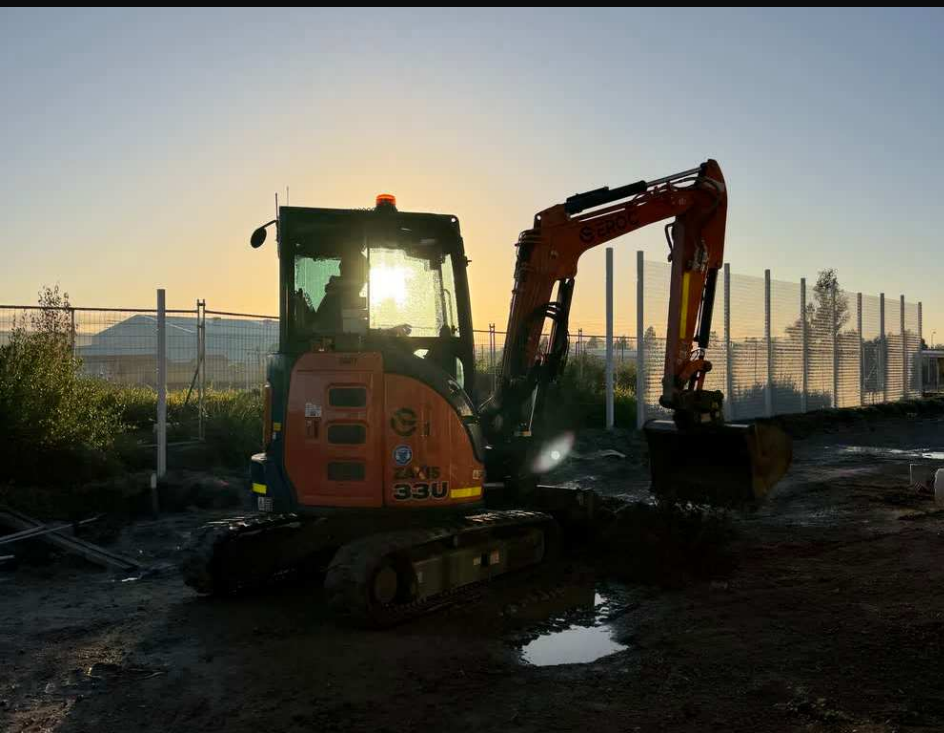
EROC delivers at every scale — small, medium and large. Our team carries the most diverse range of size and skill in the market: the same group that self-performs a \$50,000 package can lead a \$50 million scope, with supervision and engineering leadership proven across programmes valued at over \$850 million. Whatever the size of the job, it gets the same people, the same systems and the same standard.

COMPETENCIES

- Safety leadership & systems
- Quality management
- Environmental management
- Commercial management
- Subcontractor management
- Program management
- Technical support & on-site presence

SCOPE OF WORKS

- Site compounds & establishment
- Bulk & detailed earthworks
- Pavement construction
- Drainage & in-ground services
- Structural & civil concrete
- Carparks & hardstands
- Landscaping & urban design



EROC ENGINEERING PROJECTS.

Delivered by EROC, our engineering and project management division. Our supervisors and engineers have been tried and tested as managing contractors on Victoria's Big Build — leading civil, earthworks and drainage scopes valued to \$50M and managing multiple subcontracts of \$2–5M concurrently. That experience filters directly into EROC's delivery for every client.

Pakenham Level Crossing Removal JOHN HOLLAND · LXP



Croydon & Ringwood East Level Crossing Removals LAING O'ROURKE · LXP



EROC CIVIL PROJECTS.

EROC Civil specialises in delivering high-quality civil works within the commercial Tier 1 market — every package delivered to the highest standards of safety, efficiency and compliance, making us a trusted partner to Australia's largest contractors.

Cranbourne Community Hospital LENDLEASE



Diggers Rest Level Crossing Removal WPA



Suburban Rail Loop SRL



ECON PROJECTS.

Eroc Construction (ECON) has built a strong reputation delivering high-quality works across the commercial and public sectors — servicing local councils, the Department of Transport and the Victorian School Building Authority with reliability, innovation and collaboration on critical community infrastructure.

Wye River Bridge DEPARTMENT OF TRANSPORT



Newborough Primary School Redevelopment VSBA



Heidelberg Primary School Redevelopment VSBA





Building Different.

PHONE

0499 741 219

EMAIL

admin@eroc.au

WEB

eroc.au